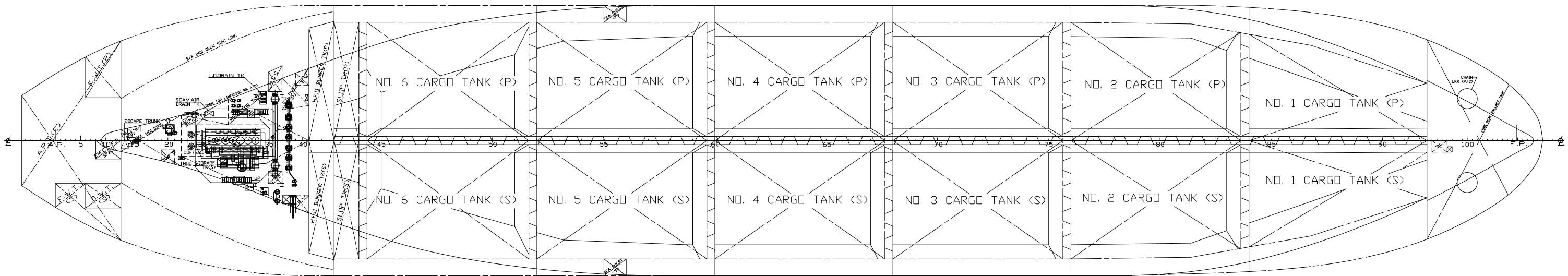


PROFILE



TANK TOP

PRINCIPLE PARTICULARS

LENGTH (O.A.)	183.2 M
LENGTH (B.P.)	174.0 M
BREADTH	32.2 M
DEPTH	18.8 M
DRAFT (DES./SUM.)	11.0 / 12.2 M
DISPL. (DES./SUM.)	49,948 / 56,163 MT
DWT (DES./SUM.)	40,072 / 46,287 MT
MAIN ENGINE	MAN-B&W 6550MC
BHP	11,640 @ 127 RPM
ABS ID NO.	10171050
IMO NO.	9353591

CARGO TANK SUMMARY

COMPARTMENTS	LOCATION (FR. NO.)	VOLUME			CENTER OF GRAVITY (M)		l <sub>max</sub> (M <sup>3</sup> )
		100% (M <sup>3</sup> )	98% (M <sup>3</sup> )	98% (BARREL)	V.C.G FROM B.L.	L.C.G FROM MIDSHIP	
NO.1 CARGO TANK (P)	83.6-92.0	3326.9	3260.4	20507.5	11.162	64.29	2324
NO.1 CARGO TANK (S)	83.6-92.0	3326.9	3260.4	20507.5	11.162	64.29	2324
NO.2 CARGO TANK (P)	75.6-84.0	4653.4	4560.3	28683.7	10.812	43.85	4858
NO.2 CARGO TANK (S)	75.6-84.0	4653.4	4560.3	28683.7	10.812	43.85	4858
NO.3 CARGO TANK (P)	67.6-76.0	4756.9	4661.8	29322.1	10.807	22.79	5176
NO.3 CARGO TANK (S)	67.6-76.0	4756.9	4661.8	29322.1	10.807	22.79	5176
NO.4 CARGO TANK (P)	59.6-68.0	4756.9	4661.8	29322.1	10.807	1.59	5177
NO.4 CARGO TANK (S)	59.6-68.0	4756.9	4661.8	29322.1	10.807	1.59	5177
NO.5 CARGO TANK (P)	51.6-60.0	4739.3	4644.6	29213.1	10.835	-19.59	5177
NO.5 CARGO TANK (S)	51.6-60.0	4739.3	4644.6	29213.1	10.835	-19.59	5177
NO.6 CARGO TANK (P)	44.0-52.0	4089.6	4007.8	25208.5	11.434	-39.97	4952
NO.6 CARGO TANK (S)	44.0-52.0	4089.6	4007.8	25208.5	11.434	-39.97	4952
SLOP TANK (P)	43.0-44.4	581.3	569.7	3583.3	12.070	-52.11	913
SLOP TANK (S)	43.0-44.4	581.3	569.7	3583.3	12.070	-52.11	913
TOTAL		53808.8	52732.6	331680.6	10.979	9.19	

INTERNATIONAL TONNAGE	
GROSS TONNAGE	29,234 TONS
NET TONNAGE	11,926 TONS

SUEZ TONNAGE	
GROSS TONNAGE	30,654 TONS
NET TONNAGE	25,778 TONS

PANAMA CANAL TONNAGE	
	11,926 TONS

SEASONAL FREEBOARD	FREEBOARD (MM)	DRAFT (EXT.) (M)	DISPLACEMENT (MT)	DEADWEIGHT (MT)
TF	6086	12.739	58,989	49,412
F	6343	12.485	57,656	48,079
T	6358	12.470	57,578	48,001
S	6612	12.216	56,242	46,665
V	6866	11.962	54,917	45,340

**OSG** OSG Ship Management, Inc.  
302 Knights Run Ave., Suite 1200  
Tampa, FL 33602

M/T Overseas Anacortes