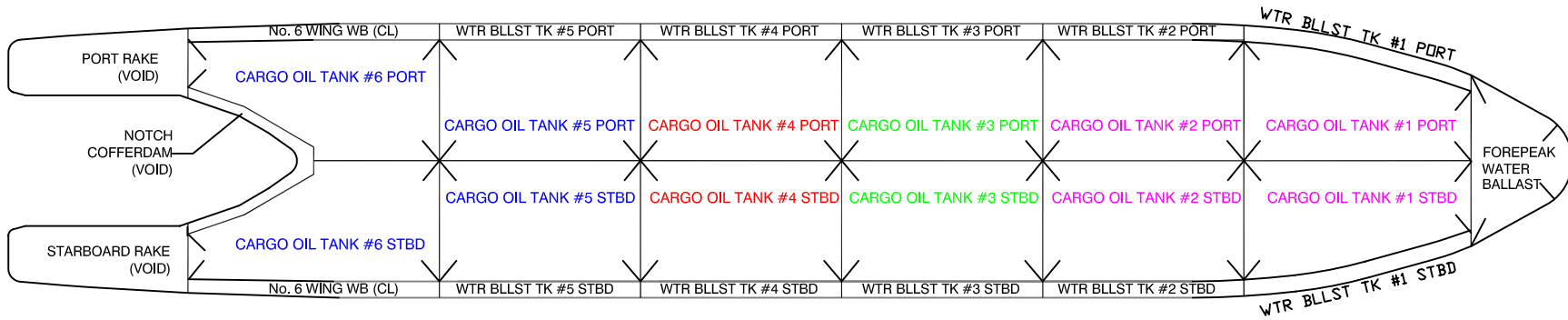


OSG 192



ARRANGEMENT

NATURAL SEGREGATIONS

TANK NAME	PUMP #
#1 Wing P.	1
#1 Wing S.	1
#2 Wing P.	1
#2 Wing S.	1
#3 Wing P.	2
#3 Wing S.	2
#4 Wing P.	3
#4 Wing S.	3
#5 Wing P.	4
#5 Wing S.	4
#6 Wing P.	4
#6 Wing S.	4

CARGO OIL TANKS

TANK NAME	LOCATION FRAME #	100% FULL CU. METER	100% FULL BARRELS	98% FULL CU. METER	98% FULL BARRELS
No. 1 Wing P.	10-19	2214.70	13939	2170.41	13660
No. 1 Wing S.	10-19	2214.70	13939	2170.41	13660
No. 2 Wing P.	19-27	2543.40	16007	2492.52	15687
No. 2 Wing S.	19-27	2543.40	16007	2492.52	15687
No. 3 Wing P.	27-35	2564.06	16137	2512.79	15815
No. 3 Wing S.	27-35	2564.06	16137	2512.79	15815
No. 4 Wing P.	35-43	2564.06	16137	2512.79	15815
No. 4 Wing S.	35-43	2564.06	16137	2512.79	15815
No. 5 Wing P.	43-51	2564.06	16137	2512.79	15815
No. 5 Wing S.	43-51	2564.06	16137	2512.79	15815
No. 6 Wing P.	51-61	1734.34	10915	1699.64	10697
No. 6 Wing S.	51-61	1734.34	10915	1699.64	10697
TOTAL		28 369.24	178546	28 701.88	174975

DEADWEIGHT

ITEM		FREEBOARD	KEEL DRAFT	DEADWEIGHT (LONG TONS)	DISPLACEMENT (LONG TONS)
TROPICAL FRESH WATER	TF	3'-11 13/16"	31'-0 15/16"	22,553	27,191 (FW)
FRESH WATER	F	4'-7 1/4"	30'-5 1/2"	21,960	26,597 (FW)
TROPICAL	T	4'-7 1/4"	30'-5 1/2"	22,625	27,262 (SW)
SUMMER	S	5' 2 11/16"	29'-10 1/16"	22,017	26,654 (SW)
WINTER	W	5'-10 1/8"	29'-2 5/8"	21,409	26,046 (SW)