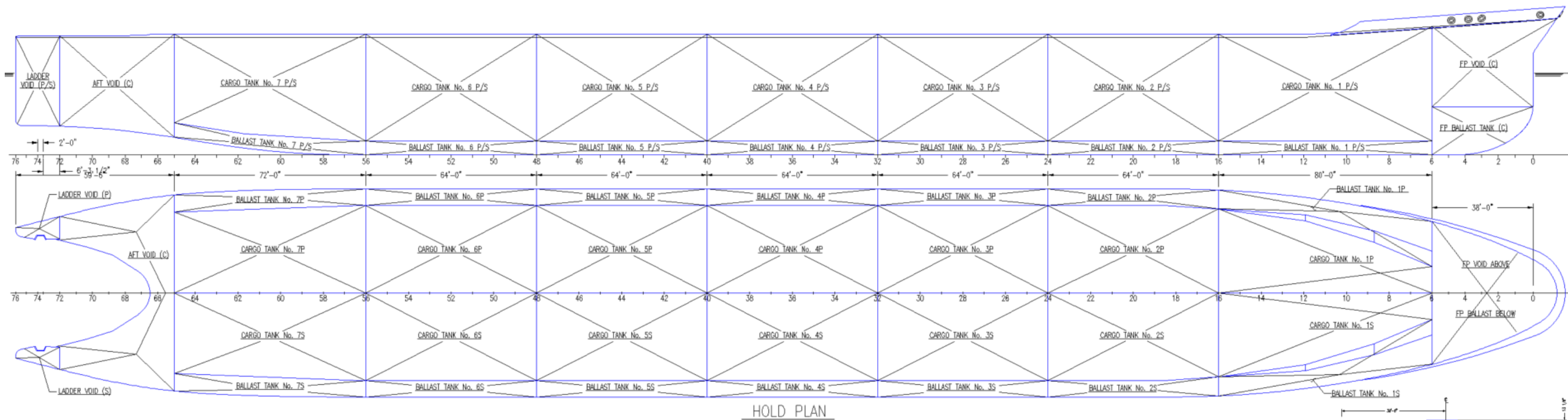


# TANK PLAN



## Summary of Cargo Tanks:

Tank	Location	Capacity @ 100%		Capacity @ 98%		VCG @ 98%	LCG @ 98%	FSM
		(BBL)	(LT)	(BBL)	(LT)			
Cargo No. 1 (P)	FR 6 - 16	14,635.7	2,404.65	14,343.0	2,356.56	25.25	82.11	4,030
Cargo No. 1 (S)	FR 6 - 16	14,635.7	2,404.65	14,343.0	2,356.56	25.25	82.11	4,030
Cargo No. 2 (P)	FR 16 - 24	14,471.7	2,377.71	14,182.3	2,330.15	24.71	150.17	5,408
Cargo No. 2 (S)	FR 16 - 24	14,471.7	2,377.71	14,182.3	2,330.15	24.71	150.17	5,408
Cargo No. 3 (P)	FR 24 - 32	14,571.0	2,394.02	14,279.6	2,346.14	24.71	214.00	5,516
Cargo No. 3 (S)	FR 24 - 32	14,571.0	2,394.02	14,279.6	2,346.14	24.71	214.00	5,516
Cargo No. 4 (P)	FR 32 - 40	14,571.0	2,394.02	14,279.6	2,346.14	24.71	278.00	5,516
Cargo No. 4 (S)	FR 32 - 40	14,571.0	2,394.02	14,279.6	2,346.14	24.71	278.00	5,516
Cargo No. 5 (P)	FR 40 - 48	14,571.0	2,394.02	14,279.6	2,346.14	24.71	342.00	5,516
Cargo No. 5 (S)	FR 40 - 48	14,571.0	2,394.02	14,279.6	2,346.14	24.71	342.00	5,516
Cargo No. 6 (P)	FR 48 - 56	14,571.0	2,394.02	14,279.6	2,346.14	24.71	406.00	5,516
Cargo No. 6 (S)	FR 48 - 56	14,571.0	2,394.02	14,279.6	2,346.14	24.71	406.00	5,516
Cargo No. 7 (P)	FR 56 - 65	14,741.2	2,421.98	14,446.4	2,373.54	25.95	472.41	5,522
Cargo No. 7 (S)	FR 56 - 65	14,741.2	2,421.98	14,446.4	2,373.54	25.95	472.41	5,522
	Total	204,265.2*		200,180.2*				

## Summary of Miscellaneous Tanks:

Tank	Location	Capacity @ 100%		Capacity @ 98%		VCG @ 98%	LCG @ 98%	FSM
		(GAL)	(LT)	(GAL)	(LT)			
Urea Tank (P)	FR 34 - 34.5	2,224	9.24	2,179	9.05	51.00	263.46	11.0
Fresh Water (S)	FR 47.5 - 48.5	3,299	12.29	3,233	12.04	52.21	374.50	2.6
Fuel Tank No. 1 (S)	FR 49 - 50.5	16,531	53.58	16,201	52.51	52.34	388.00	146.4
Fuel Tank No. 2 (S)	FR 50.5 - 52	16,531	53.58	16,201	52.51	52.34	400.00	146.4
Hold Tank No. 1 (S)	FR 52 - 54	10,846	41.42	10,629	40.59	52.34	414.00	27.4
Hold Tank No. 2 (S)	FR 52 - 54	11,196	42.76	10,972	41.90	52.34	414.00	30.1
	Total	60,627	212.87	59,415	208.60			

## Summary of Ballast Tanks:

Tank	Location	Capacity @ 100%		Capacity @ 98%		VCG @ 98%	LCG @ 98%	FSM
		(BBL)	(LT)	(BBL)	(LT)			
Forepeak Freshwater / Ballast (C)	FR 0 - 6	2,435.3	390.59	2,386.6	382.78	10.33	25.51	2,551
Ballast No. 1 (P)	FR 6 - 16	6,279.2	1,007.10	6,153.6	986.96	16.41	79.56	7,133
Ballast No. 1 (S)	FR 6 - 16	6,279.2	1,007.10	6,153.6	986.96	16.41	79.56	7,133
Ballast No. 2 (P)	FR 16 - 24	5,085.5	815.65	4,983.8	799.34	13.96	149.63	8,875
Ballast No. 2 (S)	FR 16 - 24	5,085.5	815.65	4,983.8	799.34	13.96	149.63	8,875
Ballast No. 3 (P)	FR 24 - 32	5,007.0	803.07	4,906.9	787.00	13.78	214.00	8,902
Ballast No. 3 (S)	FR 24 - 32	5,007.0	803.07	4,906.9	787.00	13.78	214.00	8,902
Ballast No. 4 (P)	FR 32 - 40	5,006.8	803.02	4,906.6	786.96	13.78	278.00	8,902
Ballast No. 4 (S)	FR 32 - 40	5,006.8	803.02	4,906.6	786.96	13.78	278.00	8,902
Ballast No. 5 (P)	FR 40 - 48	5,006.7	803.01	4,906.5	786.95	13.78	342.00	8,902
Ballast No. 5 (S)	FR 40 - 48	5,006.7	803.01	4,906.5	786.95	13.78	342.00	8,902
Ballast No. 6 (P)	FR 48 - 56	5,006.4	802.97	4,906.3	786.92	13.78	406.00	8,902
Ballast No. 6 (S)	FR 48 - 56	5,006.4	802.97	4,906.3	786.92	13.78	406.00	8,902
Ballast No. 7 (P)	FR 56 - 65	5,952.9	954.77	5,833.8	935.68	15.73	473.59	8,170
Ballast No. 7 (S)	FR 56 - 65	5,952.9	954.77	5,833.8	935.68	15.73	473.59	8,170
	Total	77,124.3	12,369.77	75,581.6	12,122.40			